



FREEHOLD

House - Detached

'YEW TREE HOUSE' HUNSDON ROAD, WIDFORD, HERTFORDSHIRE, SG12

Guide Price

£1,295,000

FEATURES

- Chain Free
- Set Behind Private Electric Gates
- Three Luxury Bathrooms
- Impressive Open Plan Living/Kitchen/Dining Spanning Width Of House
- Stunning Contemporary Detached Family Home
- 5 Double Bedrooms
- Underfloor Heating Throughout Ground Floor
- Landscaped Rear Garden



Hunsdon Road Widford SG12 8SE

Step inside through the bespoke solid oak front door and you're greeted by an inviting hallway, flooded with natural light and seamlessly connecting to the main living spaces. Underfloor heating runs throughout the ground floor, adding warmth and luxury.

The dual-aspect family room, complete with polished porcelain tiles and a feature fireplace, offers a cosy space to relax. The dining room impresses with its triple aspect and dramatic floor-to-ceiling fireplace with log store and wood-burning stove — perfect for entertaining. At the rear, the expansive kitchen/dining/living area truly becomes the heart of the home: bespoke cabinetry, quartz worktops, integrated Siemens appliances and a central island breakfast bar come together in a space filled with natural light from two sets of bi-folding doors opening onto the garden. A separate utility room keeps everyday essentials neatly tucked away.

Upstairs, five well-proportioned bedrooms provide excellent family accommodation. The principal suite enjoys its own walk-in wardrobe and en-suite shower room, while the guest bedroom also benefits from an en-suite. A stylish family bathroom serves the remaining bedrooms.

Outside, the landscaped rear garden has been thoughtfully designed for both relaxation and entertaining, featuring an extensive slate patio, a central up-lit Yew Tree, a manicured lawn and a spacious summer house/storage shed.

A truly unique family home offering modern living in a sought-after semi-rural location.

Offered with no onward chain.

Contact Mount & Co to arrange your viewing.



MOUNT & CO | 2 MARKET PLACE, HERTFORD, HERTFORDSHIRE, SG14 1DF



MOUNT & CO | 2 MARKET PLACE, HERTFORD, HERTFORDSHIRE, SG14 1DF



MOUNT & CO | 2 MARKET PLACE, HERTFORD, HERTFORDSHIRE, SG14 1DF

Call us on

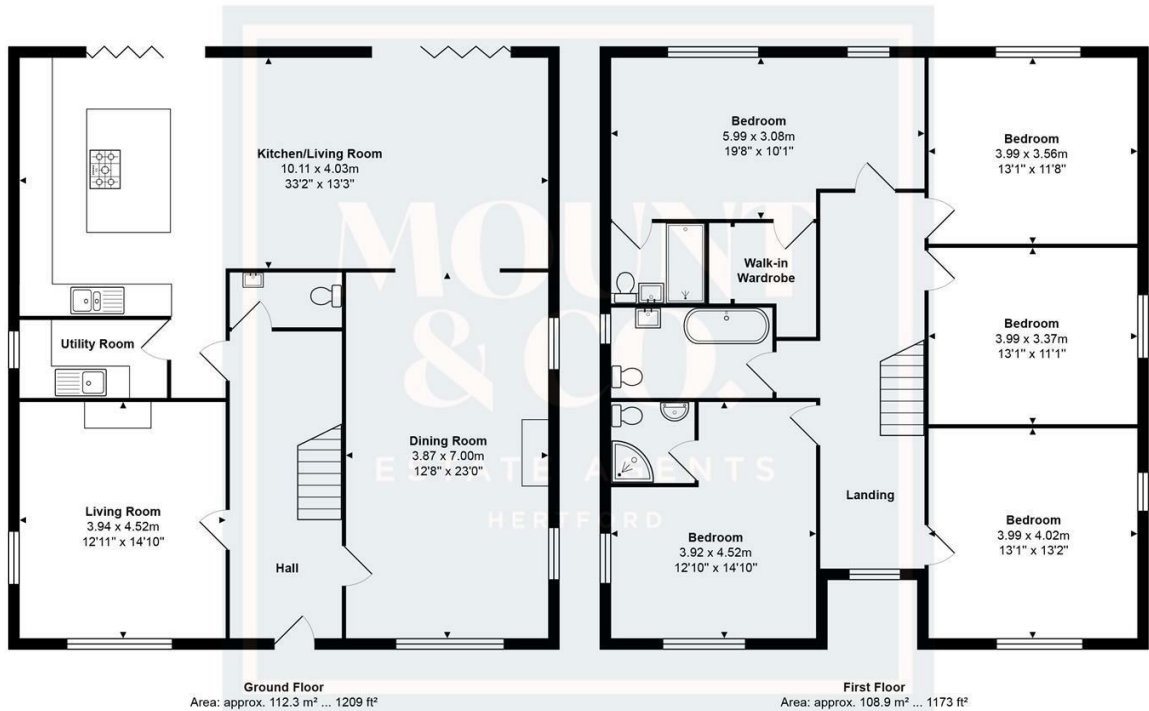
01992 937 011

hello@mountandco.co.uk

https://www.mountandco.co.uk/

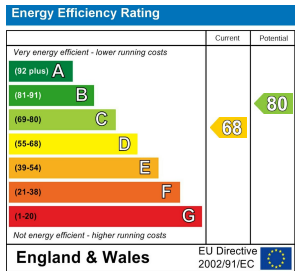
Council Tax Band

E



Ground Floor Area: approx. 112.3 m² ... 1209 ft²
First Floor Area: approx. 108.9 m² ... 1173 ft²

Total Area: approx. 221.2 m² ... 2381 ft²
THE FLOORPLAN IS FOR ILLUSTRATIVE PURPOSES ONLY AND IS NOT TO SCALE.
Measurements and features are approximate and may differ from the actual property. Verify all details independently; no liability is accepted for errors or omissions.
Property marketing provided by www.fotomarketing.co.uk



Agents Note: Whilst every care has been taken to prepare these particulars, they are for guidance purposes only. All measurements are approximate and are for general guidance purposes only and whilst every care has been taken to ensure their accuracy, they should not be relied upon and potential buyers are advised to recheck the measurements.